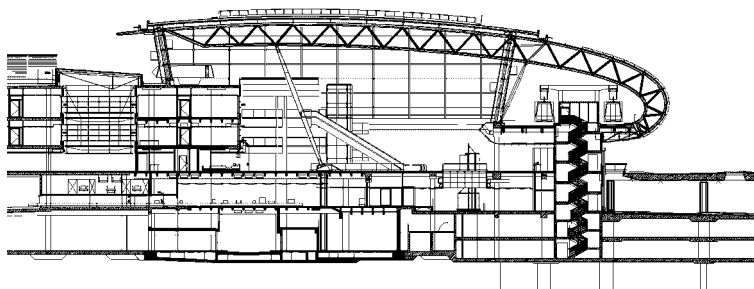


Solar-shading systems of stainless steel tube

Fixed solar-shading systems filter out a defined proportion of the sun's radiation. Transparent, lightweight structures provide both shading and protection from glare, as well as ensuring even light distribution inside, as shown here in the new terminal at Düsseldorf Airport.

The steel trusses curving over the main hall of the terminal pierce the glass façade and continue in an elliptical shape around the tracks of the new 'SkyTrain', an overhead monorail system at the airport. The resulting



tubular encasement is clad on the outside with stainless steel tubes (grade: 1.4404) fixed horizontally.



The girders of the hall roof arch elliptically around a 400-metre stretch of the tracks of the new SkyTrain. The outside of the steel and glass construction is clad with stainless steel tubes.



Client: FDG Flughafen Düsseldorf GmbH, Germany
Architects: J.S.K. Architekten, Düsseldorf, Germany
Photos: Fotostudio Koslowski, Düsseldorf, Germany (top),
Thomas Pauly, Brussels, Belgium (right)